



MODERN  
BUILDING PRODUCT



# PERSONAL ACCESS DOORS



# PERSONAL ACCESS DOORS

Modern Building Product is proud to be offering personal access doors, these are suitable for sheds and garages and have been manufactured from locally sourced steel from New Zealand Steel.

## OUTSIDE VIEW



## INSIDE VIEW



## DOOR PANEL

35mm Sandwich panel consisting of two COLORSTEEL® ENDURA® 0.59/G300 steel skins, laminated to a Flame retardant EPS core, compliant with AS1366.

External colour options as per from the colour range.

Internal colour is a matching COLORSTEEL® ENDURA® grey backer.

## FRAME

Proprietary aluminium extrusions 6060-T5 alloy. Powder coated to match.

Heavy duty wall thickness at hinge location. Rubber weather seal.

LH or RH ( reversible ) open outwards and open inwards options for PA Door With Full Frame.

LH or RH ( To be specified when ordered ) for PA Door with no frame.

Corner gussets for mitre reinforcing.

## WEIGHTS

Door and frame	28.1Kg
Packed weight	44.4Kg

## LOCK AND HANDLE

Commercial grade entry lock - Satin chrome lever action.

## PACKAGING

Timber crate and cardboard protection.

## DOOR STOP/HOLDBACK

Mardeco doorstop/holdback is a recommended optional extra.



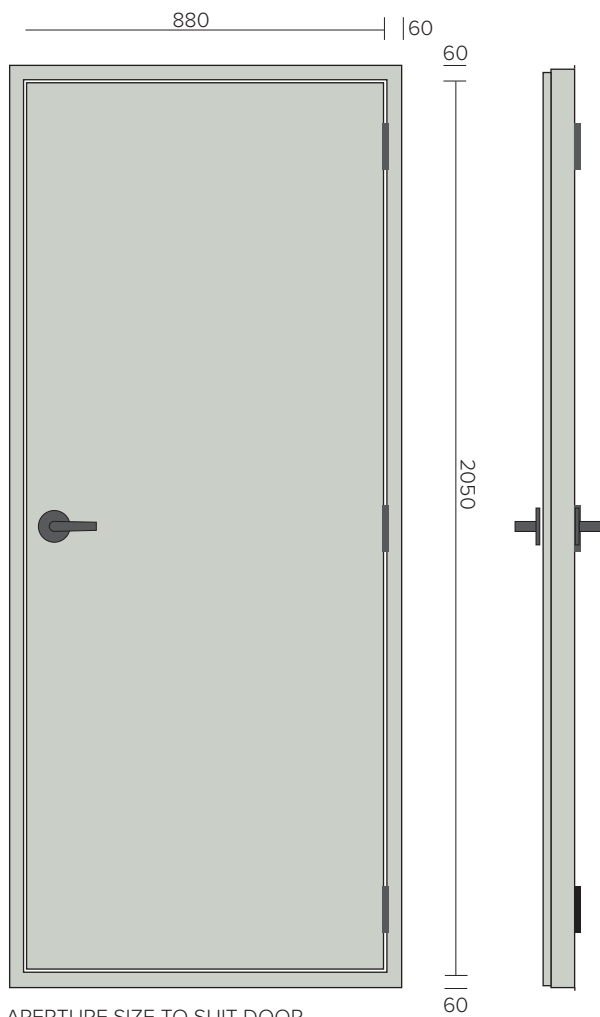
## HINGES

Heavy duty stainless steel  
3 per door leaf.

# FRAME OPTIONS

## PA DOOR WITH FULL FRAME

The standard PA door frame has the frame around the full perimeter of the door, so it is reversible (able to simply be turned upside down) if you want the door to be right or left hand opening.



APERTURE SIZE TO SUIT DOOR  
Height = 2060mm  
Width = 890mm

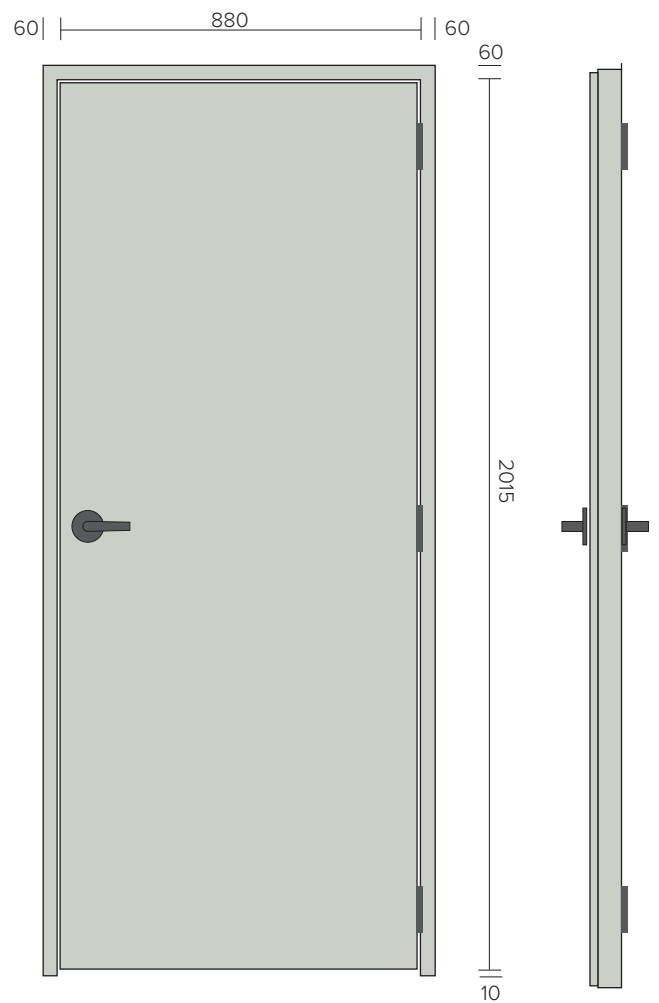
| 71 |

## PA DOOR WITH NO BOTTOM FRAME

The no bottom frame option is used when a door is to be installed in an internal wall of a building or on an outside wall where you want to form a rebate in the concrete slab as a weather precaution and you prefer no bottom frame, which can be a potential trip hazard.

The no bottom frame option has the side frames extending lower than the door itself by 10mm.

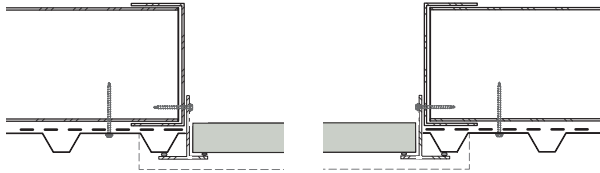
If you select the option of no bottom frame you will also need to choose RH or LH opening.



APERTURE SIZE TO SUIT DOOR  
Height = 2025mm  
Width = 890mm

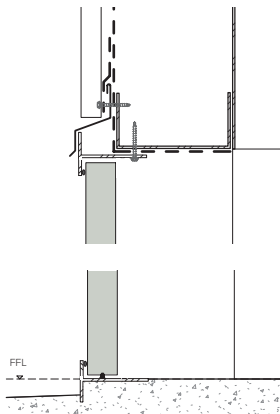
| 71 |

# TYPICAL INSTALLATION



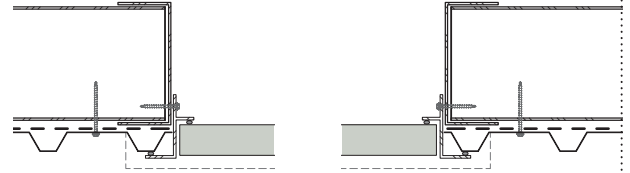
## DOOR PLAN VIEW

For Metrib, Trimrib and Corrugate cladding a Jamb liner flashing may be required.



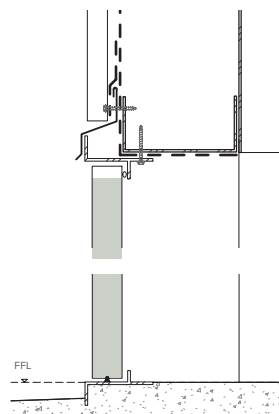
## DOOR CROSS SECTION

### OPEN INWARDS DOOR



## DOOR PLAN VIEW

For Metrib, Trimrib and Corrugate cladding, a Jamb liner flashing may be required.



## DOOR CROSS SECTION

### OPEN OUTWARDS DOOR

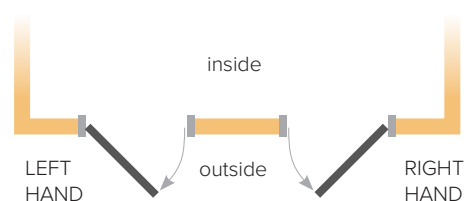
## HOW TO DETERMINE IF MY DOOR IS RH OR LH?

Determining the handing of a door is always done from the outside of the door.

## DO YOU WANT RIGHT HAND OR LEFT HAND OPENING?

When you are standing outside the room looking at the door, if the door hinges are on the right; the door is Right Hand.

When you are standing outside the room looking at the door, if the door hinges are on the left; the door is Left Hand.



# STANDARD COLOURS

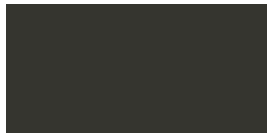
Personal Access doors are available in 9 standard colours in COLORSTEEL® ENDURA® from New Zealand Steel and are also available in ZINCALUME® from New Zealand Steel.

Other COLORSTEEL® ENDURA® colours are available by request at a small additional cost.

We recommend checking your chosen colour against an actual sample of the product before purchasing as varying light conditions and limitations of the printing process affect colour tones. Colour brochures and steel swatches are available on request.



EBONY



IRONSAND



KARAKA



GREY FRIARS



NEW DENIM BLUE



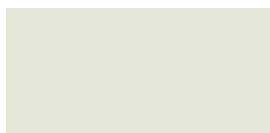
SANDSTONE GREY



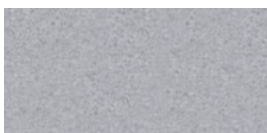
DESERT SAND



GULL GREY



TITANIA



ZINCALUME®



# CONTACT

WARREN DINGLE

Mobile: 021 867 009

Email: [warren@donovangroup.co.nz](mailto:warren@donovangroup.co.nz)

